



# Help Desk Topic

Kenneth Desautels, M.Ed.

Technology Coordinator

kdesautels@baypath.tec.ma.us

508-248-5971 ext. 1738

## Drive P Information:

All informational and Bay Path staff documents are available on the school network. This network resource is mapped as a folder entitled Teacher Memo on drive P. To retrieve a document you simply access drive P from the “my computer” icon. Once the list for this drive is listed, double click on the folder “Teacher Memo” to see the contents. Documents include start of year memos, teacher duties, schedules, etc.

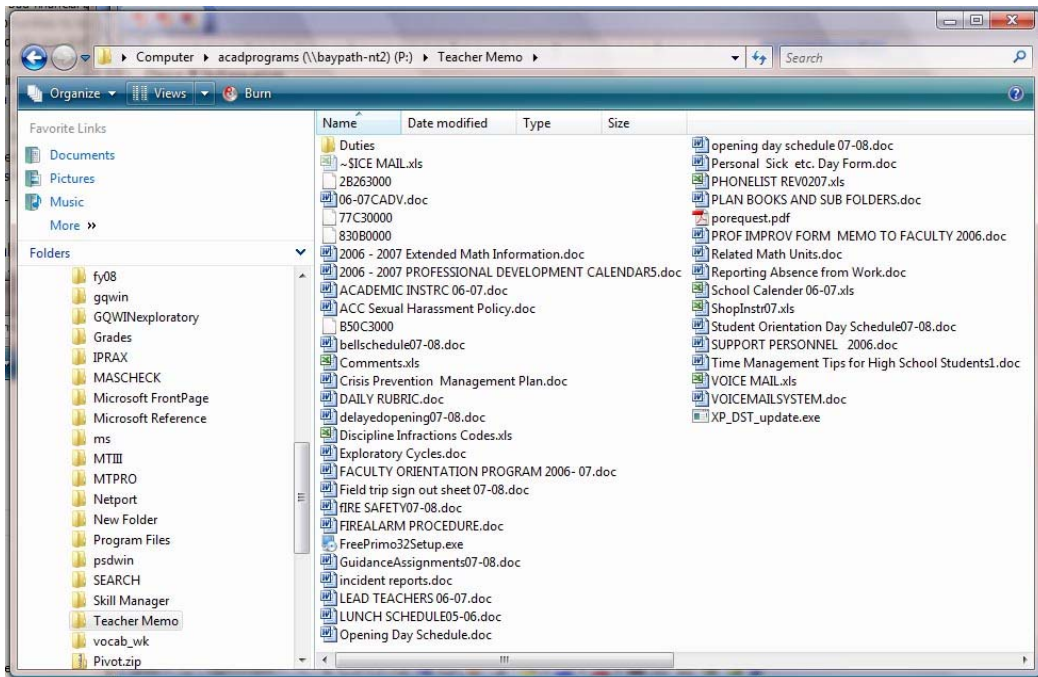


fig. drivep